

Release Note

Date of Release	1 July 2022
Type	iFile Tool
Version	v.1.0.51

Release of iFile Excel Tool:

This is the Excel-based desktop application used to generate the XBRL file for each sector. The latest version of this tool is applicable for all the entry points. So the different filters don't have to install different versions of the tool. This one tool can be installed and used by all types of entities.

Release Note:

1. Validation added if user failed to attach the English and Arabic Notes word document at List of Notes section
2. Validation added if the user failed to add details in Audit Report for few entry points
3. Subtotals for cash flow from operating activities have been updated for islamic Banks, Investment companies, Non-Brokerage Licensed Entities, and Finance Companies
4. Minor formula changes for Insurance & reinsurance and takaful insurance sector
5. Validator Upgraded to v.4.0.8 to enhance the iFile tool Security
6. Added links to the guidance documents on iFile tool box
7. Some Minor fixes and label changes.

Please find the link for downloading the iFile Excel Tool 1.0.51 -

<https://drive.google.com/file/d/1AB82fqZEV0H2laKUp9ZYQmg2k-01ELvB/view?usp=sharing>

CMA_Oman_iFile_Excel_Tool_1.0.51: This zip file consists of the Installer to install on your system.

Exclusive Video demo for Single Notes:

<https://drive.google.com/file/d/15ZDj0Oz1eRVHBLVsvKpfQJCyd4ZLlbFJ/view?usp=sharing>

Guide for Single Notes:

<https://drive.google.com/file/d/1gUCe8u2LJASxQwol-pG0DDZP0nao2sFS/view?usp=sharing>

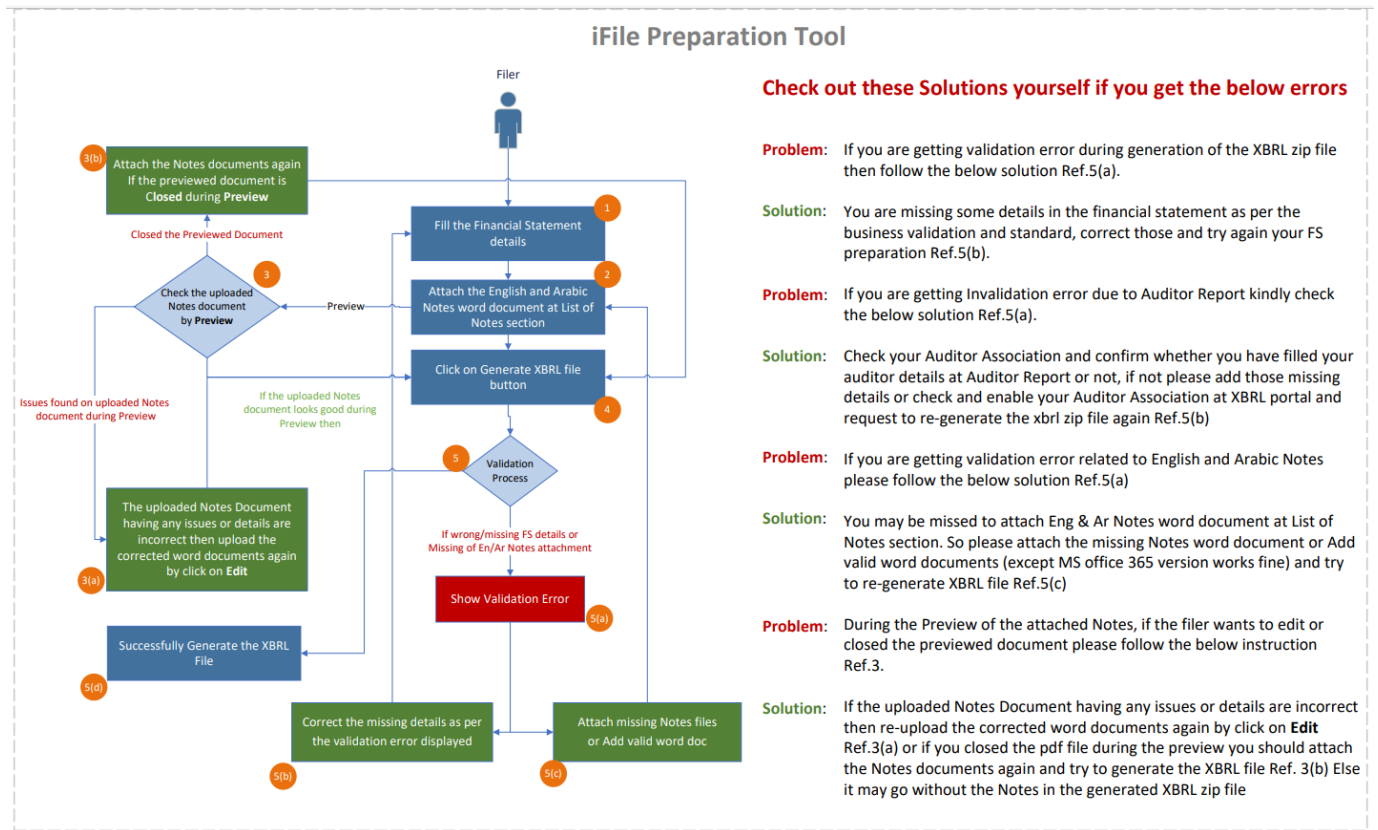
The link for the documentation and videos(illustrative) are as follows:

https://drive.google.com/open?id=15tPsFI5001sQsUpHSi95uzYFchAXIHV7&authuser=shereen.george%40irisbusiness.com&usp=drive_fs

How to solve the issues by your Own:

If you face any issues during your Financial statement preparation or upload the xbrl file into XBRL portal you can try some recommended solutions yourself to avoid any delays.

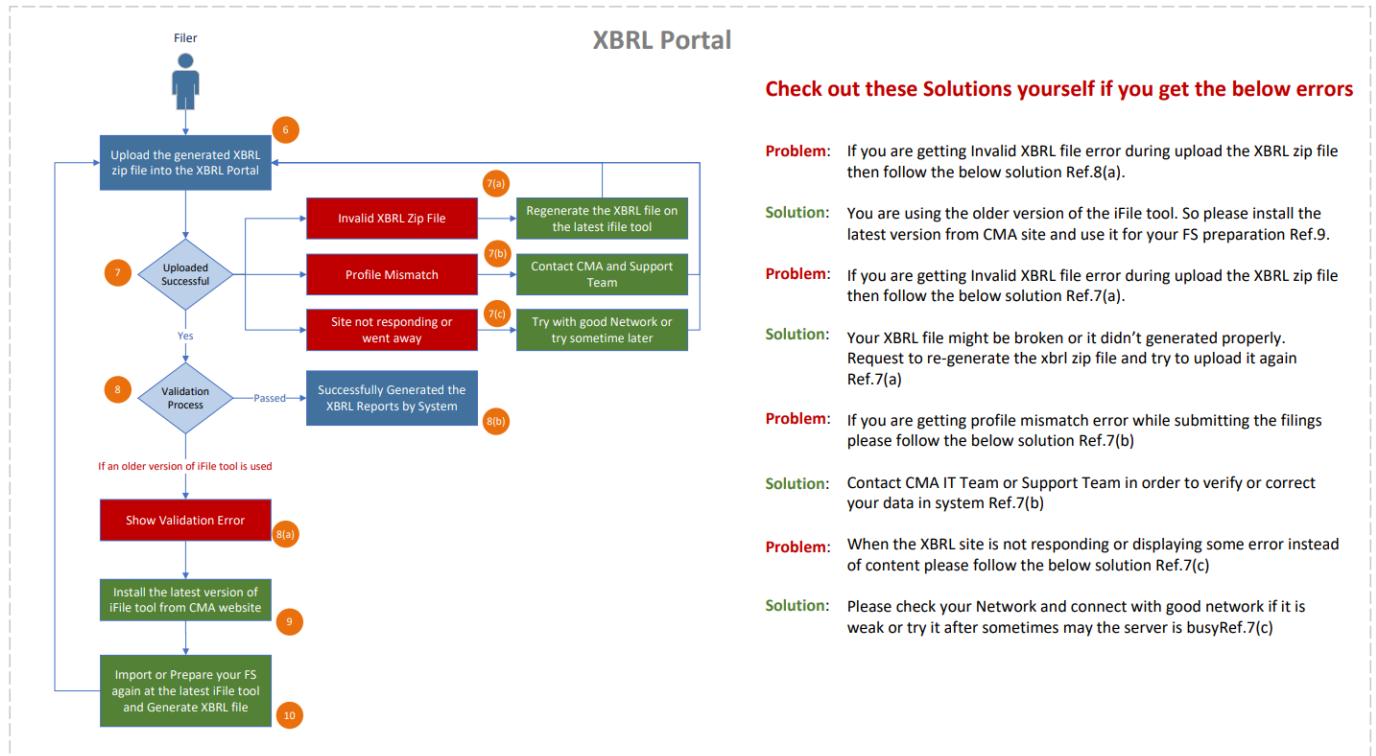
Preparation tool related common mistakes normally do by Filers and solution for the same are given below:



Kindly go through the frequently asked questions and basic business rules of iFile preparation tool from the below guidance document:

[https://cma.gov.om/Documents/XBRL/CMA%20Oman iFile-FAQ And Business%20Rules Guide.docx.pdf](https://cma.gov.om/Documents/XBRL/CMA%20Oman%20iFile-FAQ%20And%20Business%20Rules%20Guide.docx.pdf)

Common issues done by Filers on XBRL portal and the recommended solution for the same defined below:



Prerequisites for the Annual and Quarter filings:

1. **Check iFile Tool Version:** Please check your iFile tool version on the Tool box. If it is an older version then please use the latest iFile tool v.1.0.51.

iFile Excel preparation tool Installation guide is available at

https://cma.gov.om/Documents/XBRL/CMA%20Oman_iFile%20Excel%20Tool_Installation%20Guide%20.docx.pdf

2. To avoid mistakes while preparing your financial report on ifile excel tool kindly go through the frequently asked questions and basic business rules of ifile preparation tool from the below guidance document:
https://cma.gov.om/Documents/XBRL/CMA%20Oman_iFile-FAQ_And_Business%20Rules_Guide.docx.pdf
3. To avoid mismatch errors while uploading the xbrl zip file on xbrl portal, you can check your company profile details at the XBRL portal and prepare your financial reporting accordingly using the ifile tool. Please go through the following guidance document to know how to check your details at xbrl portal:
https://cma.gov.om/Documents/XBRL/CMA%20Oman_How%20To%20Check%20Company%20Details.pdf

- For the Audited and Reviewed Nature of financial statements, the filer should associate their auditor on xbrl portal before you prepare your financial statements. Please go through the below guide to know how to do Auditor Association on the XBRL portal:

For Companies:	https://cma.gov.om/Documents/CMA%20Oman_Auditor%20Association%20Guidance%20for%20Companies.docx.pdf
For Auditors	https://cma.gov.om/Documents/XBRL/SOP%20for%20Auditors_v.1.0.docx.pdf

- Please use the **Times New Roman** and **Arial** fonts on the source document from where you are copying the content for the Auditor Report and other fields on the XBRL filing page. Also we recommend to check the alignment before the submission of any information on the xbrl system. This will help to avoid any data loss during the presentation at CMA / MSX.
- Basic guidance documents are available at the CMA site to help you while doing your XBRL, Unaudited preliminary and Disclosure filings.

XBRL Filing Guidance	https://cma.gov.om/Documents/CMA%20Oman_XBRL%20Filing%20Guidance.docx.pdf
Unaudited preliminary Guidance	https://cma.gov.om/Documents/CMA%20Oman_Unaudited%20Preliminary%20Filing%20Guidance.docx%20(002).pdf
Disclosure Guidance	https://cma.gov.om/Documents/XBRL/CMA%20Oman_Disclosures%20Guidance.docx.pdf

- Because of installing this version you don't lose your data in the existing file. After installing the new tool, you can simply import the existing file and edit your existing data.

Note - All the entry point filers need to Create New Instance as there are major changes that have been done in the list of notes, Old import instances won't work.

Please refer:

https://cma.gov.om/Documents/XBRL/CMA%20Oman_Open%20iFile%20Excel%20file%20after%20installing%20latest%20iFile%20tool%20Guidance.docx.pdf

- For the Audited and Reviewed Nature of financial statements, the filer should be associated with their auditor on XBRL portal before you prepare your financial statements.

- First time Filing** - as part of the Filing Information, we have a field with the following heading –

Whether reporting entity is preparing financial statements for the first financial period since its establishment	Yes
-------------------------------------------------------------------------------------------------------------------	-----

Whether reporting entity is preparing financial statements for the first financial period since its establishment'

This element can be reported as either 'Yes' or 'No'.

- This is to be reported 'Yes' in case where the entity is reporting the financial statements for the first financial period since the establishment. Please note that this does not denote the XBRL filing for the first time, but the filing of financial statements for the first time since establishment.
- In case where the reporting entity has already filed its financial statements (either in XBRL or in any other format), then the value for this field is to be selected as 'No'.
- When this field is selected as 'Yes', following additional features are made available in the iFile Tool –
- The 'Reporting Period Start Date' field is open for selection in addition to 'Reporting Period End Date'
 - (Note: in other case, the start date is automatically calculated taking into account the end date and the frequency selected)
- The values are to be reported only for the selected reporting period, and previous year period values are not being reported (as it will not be applicable in case of first time filing)

10. Restatement and reporting for the note 'Disclosure of restatement of prior period financial statement [text block]' –

*	Whether comparative period values are restated	No
		Yes
		No

- As part of the filing information, we have a field with the following heading-'Whether comparative period values are restated'
- This element can be reported as either 'Yes' or 'No'.
- If the user reports the value for this element as Yes, it implies that the values reported in the iFile Excel tool are restated. Hence, the reporting of text block 'Disclosure of restatement of prior period financial statement' in the section 'List of Notes' becomes mandatory to be reported.

Disclosure of restatement of prior period financial statement		
---------------------------------------------------------------	--	--

- If the user does not report any value in the text block, then an error message is shown to the user to report the value in the text block.
- If the restatement is not applicable, and the user reports the value for this element as 'No', then the above mentioned text block is not mandatory to report.

11. Mismatch in value provided for same field –

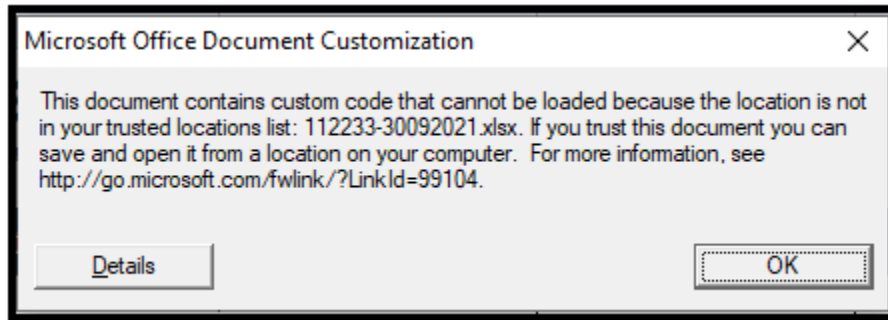
- The above error is shown when different values are reported for the same concept for the same reporting period across statements (or within different locations of the same statement). For example, 'Total Equity' reported in 'Statement of Financial Position' should match with the Total Equity reported in Statement of Changes in Equity.
- If the values reported for the same periods for the same concepts are not matching, then an error message is shown to the user as follows –
- **Case 1** : Where the values reported for same concept for the same period in separate statements are not matching -

No	Error Message/Description	Error Section
1	<p>Mismatch in value provided for same field.</p> <p><u>Element(s) to check</u> Equity at end of period (Date: 30/06/2020 Dimension: ConsolidatedMember) = 5353728 (Thousands) Total equity (Date: 30/06/2020 Dimension: ConsolidatedMember) = 5353729 (Thousands)</p>	<p>Statement of changes in equity Statement of Financial Position, Current, Non-current</p>

- **Case 2**: Where the values reported for same concept for the same period in separate locations in the same statement (Claims) are not matching –
- To check the values, the user can click on the values present in the Error messages, and it will be navigated to the particular location in the iFile tool in that specific section in the iFile template.

No	Error Message/Description	Error	Error ID
1	<p>Mismatch in value provided for same field.</p> <p><u>Element(s) to check</u> Total (Date: 30/09/2020 Dimension: ReinsurersShareOfOutstandingClaimsMember_LifeInsuranceContractsMember) = 372240 (Actuals) At the end of the period (Date: 30/09/2020 Dimension: ReinsurersShareOfOutstandingClaimsMember_LifeInsuranceContractsMember) = 372239 (Actuals)</p>	<p>Claims Claims</p>	XBRL Error
2	<p>Mismatch in value provided for same field.</p> <p><u>Element(s) to check</u> Total (Date: 30/09/2020 Dimension: GrossOutstandingClaimsMember) = 4320773 (Actuals) At the end of the period (Date: 30/09/2020 Dimension: GrossOutstandingClaimsMember) = 4320772 (Actuals)</p>	<p>Claims Claims</p>	XBRL Error

12. Saving iFile Tool in a trusted location -

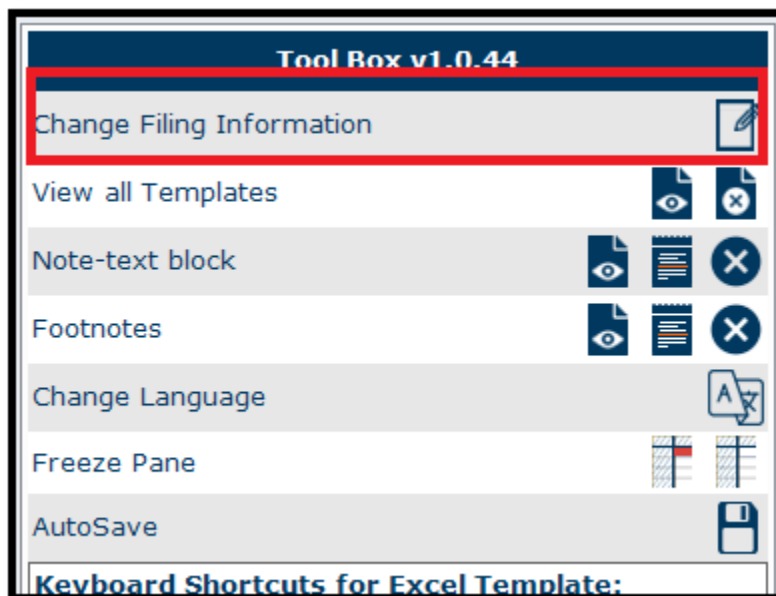


If you are not able to open the attached template or if 'Tool Box' or 'Generate XBRL' button is not coming using the template attached, the excel template may not be in 'Trusted Locations' as per Excel settings. You might also get a pop-up message as follows –

Follow the steps mentioned below and check if the buttons and other functions are available.

- Open the Excel
- Click File > Options.
- Click Trust Center > Trust Center Settings > Trusted Locations.
- Click Add new location.
- Click Browse to find the folder, select the folder "C:\Program Files\CMA Oman iFile Tool", and then click OK.
- Place the iFile Excel template in the above folder and open the template.

13. Changing Filing Information after creating the template –



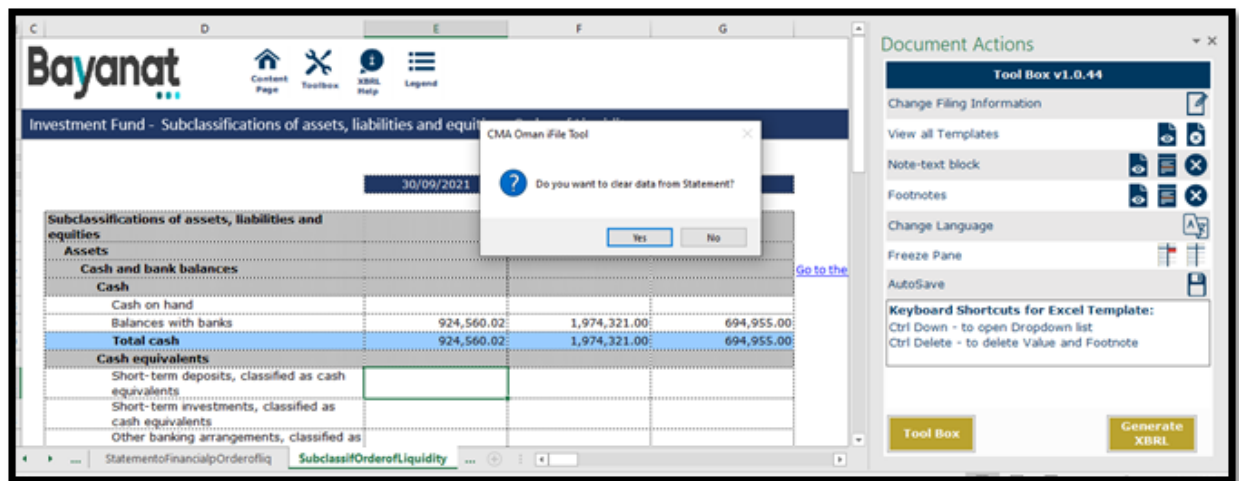
- After submitting of Filing Information and generation of templates, if the filing information details are to be updated, the same can be done using the 'Change Filing Information' button on the Tool Box.

Note: After the Filing Information is submitted and the templates are generated, following fields cannot be edited –

- Type of Company
- Listing Status
- Licensing Status
- Licensed For
- Sector
- Category of filer
- Preparation Format

14. **Removal of unwanted fields by leaving the field blank,**

- If Filer doesn't have any data for particular fields as highlighted in Red in the screenshot below, Filer can keep it as blank & won't be part of the final rendered / processed PDF.



Please follow the instructions for smooth financial statement preparation and XBRL filings.